



FIONA JACK: LIVING HALLS

LIVING HALLS is a growing collaborative archive. The paintings, drawings, honour boards, documents, database, photos, stories and audio recordings that make up this archive tell us about the War Memorial Halls of Aotearoa. Following the Second World War, New Zealanders wholeheartedly embraced the idea of constructing utilitarian memorials to honour soldiers killed in action instead of the 'traditional' monuments favoured after the First World War. Government subsidies encouraged the widespread building of community centres and halls as 'living memorials' for all to share. These were 'monuments with an inside'¹, conceptually complex spaces that were built by communities to symbolise their grief, but also to solve a practical need for a place to gather for everything from dancing to voting.

DRAWINGS: Most of New Zealand's Memorial Halls were designed and built by local people, for local people. Archives New Zealand in Wellington houses correspondence files relating to each memorial subsidy application, and deep within these files there are sometimes drawings that sketch out a vision for a hall. Some are overly ambitious, some are little more than a square drawn on a scrap piece of paper, but almost all the drawings are very close to what was eventually built. Jack has faithfully replicated these drawings in minute detail, honouring the vision and effort of the people that spent many years toiling away to fund, design, build and maintain their halls.

PAINTINGS: Today a great many War Memorial Halls are still

loved and maintained by their communities. In response to the original impetus for communities to decide for themselves what their hall would look like, Jack invited local painters around the country to depict their neighbourhood Memorial Hall, creating a rich visual archive that reflects the close and active relationships between these buildings and those who use them.

HONOUR BOARDS: While most War Memorial Halls continue to exist as 'living memorials' in the truest sense, some have been demolished or have succumbed to fire. A number are currently under threat from financial pressure, council audits or urban drift, and no doubt in years to come this will continue to change. Fiona Jack's roll of honour boards list the names of New Zealand's Memorial Halls, noting with an asterisk those that have gone, moved, or are no longer considered to be a War Memorial. The boards are unvarnished and unfinished, reflecting the vitality and impermanence that is at the heart of a truly living memorial.

ARCHIVES: Before the Living Halls project there was no comprehensive knowledge about New Zealand's War Memorial Halls, and it was not known how many there were/are. The Living Halls archive now lists over 400 hundred halls, and includes research, ephemera, stories and histories from people all over the country. Contributions, corrections and additions to the archive are gratefully received.

Fiona Jack and Rhana Devenport (exhibition curator)

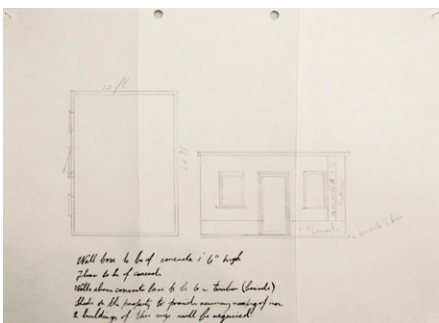
¹ Tom Nicholson, in conversation with Fiona Jack and Sam Durant about Living Halls

DRAWINGS

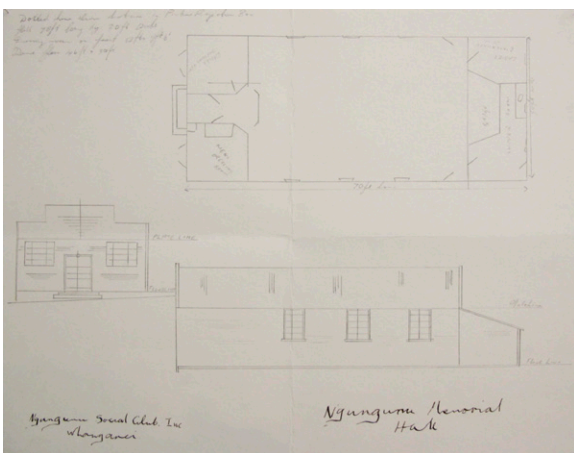




1 Proposed Memorial Hall for Kaitangata, ink on paper, 245 x 180mm, 2010. Replica of drawing held in Archives New Zealand, artist unknown, reference IA1 3133 174/276



2 Ohaupo Memorial Hall, graphite and ink on paper, 210 x 290mm, 2010. Replica of drawing held in Archives New Zealand, artist unknown



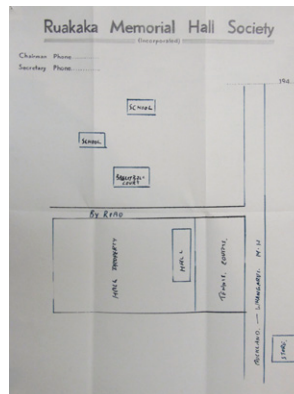
3 Ngunguru Memorial Hall, graphite and ink on paper, 305 x 385mm, 2010. Replica of drawing held in Archives New Zealand, artist unknown, reference 174/669



4 Proposed Memorial Extension to Barrytown Hall, coloured pencil on paper, 273 x 340mm, 2010. Replica of drawing held in Archives New Zealand, artist unknown, reference IA1/3152 174/607



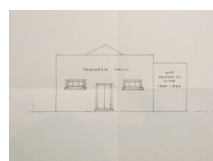
5 Hawarden Park Memorial Hall, ink on paper, 192 x 257mm, 2010. Partial replica of drawing held in Archives New Zealand, artist unknown



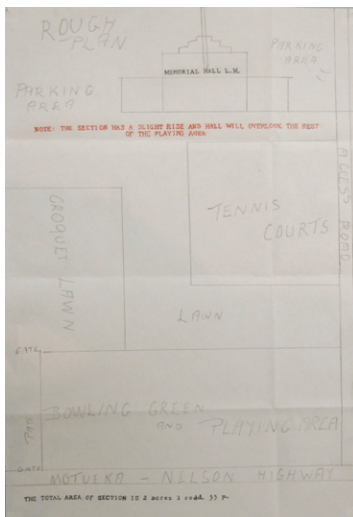
6 Ruakaka Memorial Hall Society, graphite and ink on paper, 268 x 198mm, 2010. Replica of drawing held in Archives New Zealand, artist unknown, reference IA1/3121 174/116



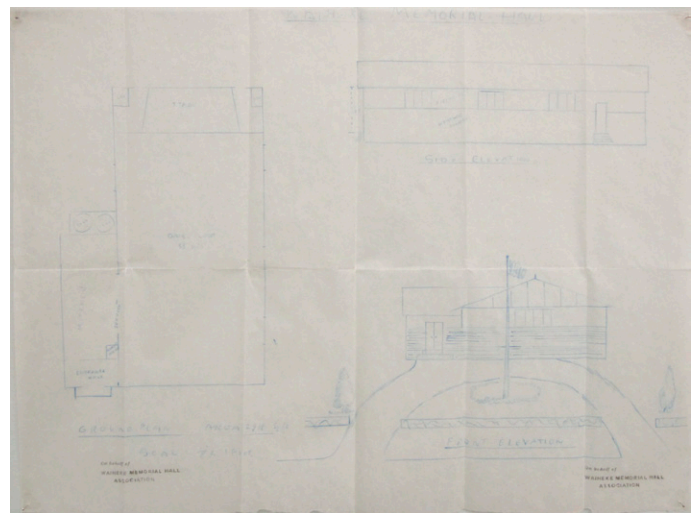
7 Taumaranui and District War Memorial Hall, gouache and graphite on paper, 190 x 347mm, 2010. Partial replica of drawing held in Archives New Zealand, original drawing by Thorpe, Cutler, Pickmere & Douglas reference IA1 3129 174/213



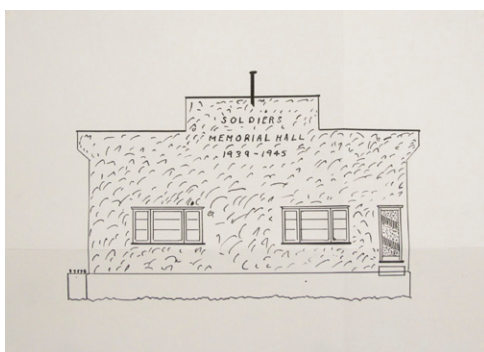
8 Taikorea Hall, ink on paper, 170 x 230mm, 2010. Partial replica of drawing held in Archives New Zealand, (Sanson, Drawer No. 16, Manawatu County Council), reference IA1/3132 174/252



9 Lower Moutere Memorial Hall, graphite and coloured pencil on paper, 340 x 220mm, 2010. Replica of drawing held in Archives New Zealand, artist unknown, reference IA1 3118 174/70



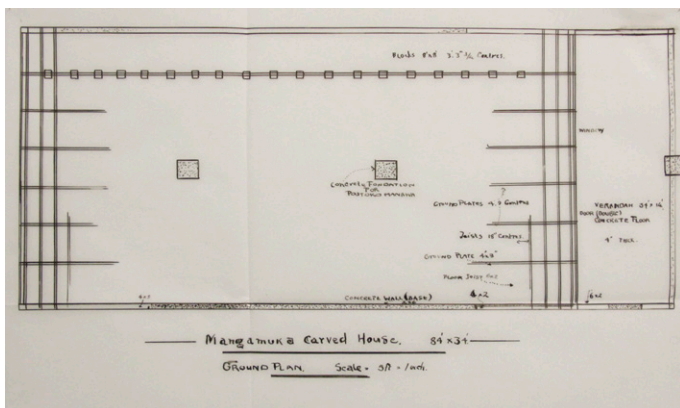
13 Waiheke Memorial Hall, coloured pencil and watercolour on tracing paper, 350 x 452mm, 2010. Replica of drawing held in Archives New Zealand, artist unknown, reference IA1/3152 174/603



10 Soldier's Memorial Hall (Ngaruawahia), ink on paper, 240 x 320mm, 2010. Replica of drawing held in Archives New Zealand, artist unknown



14 Fernside Memorial Hall, graphite and watercolour on paper, 174 x 274mm, 2010. Partial replica of drawing held in Archives New Zealand, original drawing by F T Ager, reference IA1 3141 174/412



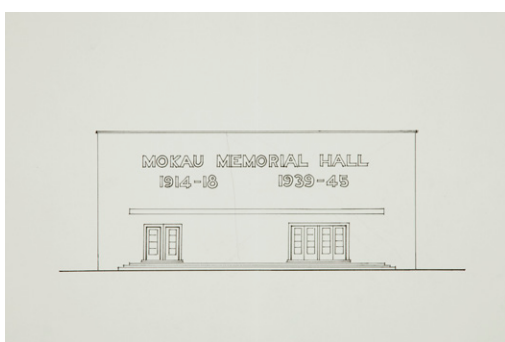
11 Mangamuka Carved House, ink on drafting film, 285 x 455mm, 2010. Replica of drawing held in Archives New Zealand, artist unknown, reference IA1 3143 174/441



15 Kaingaroa Hall, graphite on paper, 220 x 397mm, 2010. Partial replica of drawing held in Archives New Zealand, artist unknown, reference IA1/3138 174/357



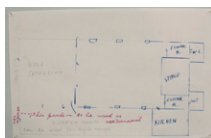
16 War Memorial Hall for Mangonui, coloured pencil and ink on paper, 230 x 195mm, 2010. Replica of drawing held in Archives New Zealand, artist unknown, reference IA1 3136 174/323



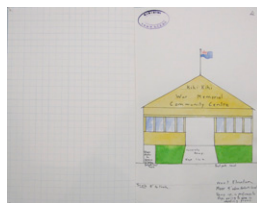
12 Mokau Memorial Hall, ink on paper, 250 x 360mm, 2010. Partial replica of drawing held in Archives New Zealand, original drawing by A K Thorne, reference IA1/3152 174/614



17 Westlands District / Hokitika War Memorial, ink and watercolour on paper, 207 x 296mm, 2010. Partial replica of drawing held in Archives New Zealand, artist unknown, reference IA1 3140 175/392



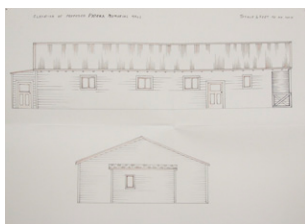
18 Eveline Centennial and War Memorial Hall (Oamaru), ink and graphite on paper, 135 x 225mm, 2010. Replica of drawing held in Archives New Zealand, artist unknown



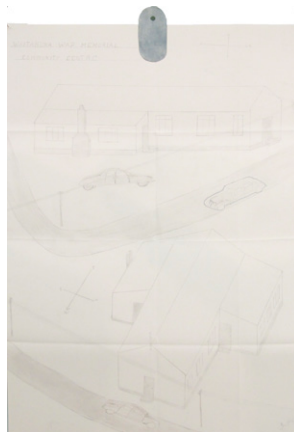
24 Kihikihi War Memorial Community Centre, ink, watercolour, coloured pencil and graphite on paper, 210 x 274mm, 2010. Partial replica of drawing held in Archives New Zealand, artist unknown, reference IA1 3118 174/65



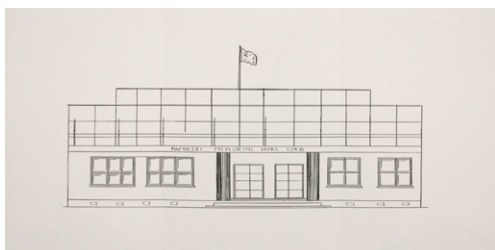
19 Proposed Memorial Hall – Lumsden, coloured pencil on paper, 145 x 265mm, 2010. Partial replica of drawing held in Archives New Zealand, artist unknown, reference IA1 3136 174/319



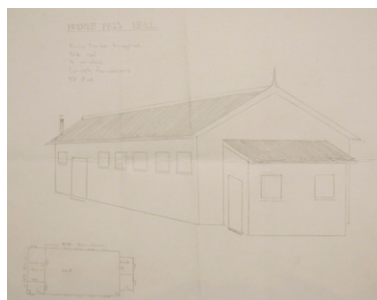
20 Proposed Patoka Memorial Hall, ink and coloured pencil on paper, 257 x 320mm, 2010. Replica of drawing held in Archives New Zealand, artist unknown



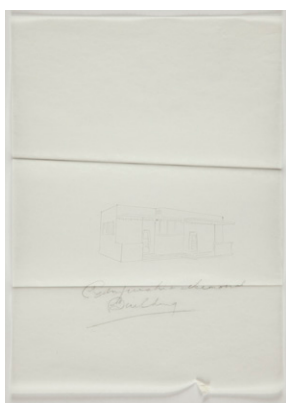
25 Waitahuna War Memorial Community Centre, graphite, coloured pencil and watercolour on paper, 474 x 315mm, 2010. Replica of drawing held in Archives New Zealand, original drawing by Ted H G, reference 174/224



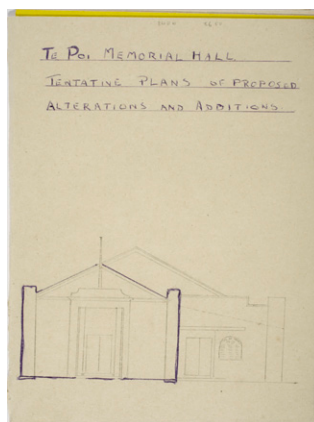
21 Awakeri Memorial Hall, ink on paper, 285 x 530mm, 2010. Partial replica of drawing held in Archives New Zealand, artist unknown, reference IA1 3137 174/338



26 French Pass Hall, graphite on paper, 330 x 407mm, 2010. Replica of drawing held in Archives New Zealand, artist unknown, reference IA1/3116



22 Rangiwahia Memorial Building, graphite on paper, 300 x 210mm, 2010. Replica of drawing held in Archives New Zealand, artist unknown, reference IA1/3121 174/112



27 Te Poi Memorial Hall, ballpoint pen and graphite on card, 440 x 330mm, 2010. Replica of drawing held in Archives New Zealand, artist unknown, reference 3139 174 /365



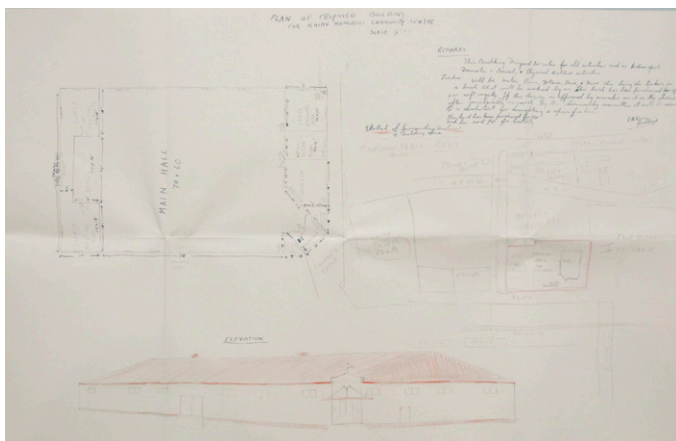
23 Waitawheta War Memorial Hall, ink on paper, 150 x 225mm, 2010. Partial replica of drawing held in Archives New Zealand, artist unknown, reference IA1 3137 174/330



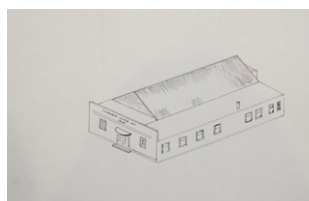
28 Komata Nth Social Centre War Memorial, ink on paper, 193 x 250mm, 2010. Partial replica of drawing held in Archives New Zealand, artist unknown, reference 174/505



33 Woodend Memorial Hall, ink on paper, 230 x 350mm, 2010. Partial replica of drawing held in Archives New Zealand, original drawing by A Eunson, reference IA1 3143 174/435



29 Proposed Building for Kaihu Memorial Community Centre, ink, graphite and coloured pencil on paper, 491 x 760mm, 2010. Replica of drawing held in Archives New Zealand, artist unknown, reference 174/425



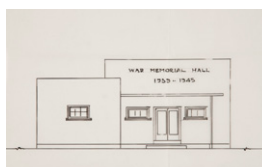
34 Clandeboye Memorial Hall, ink on paper, 215 x 334mm, 2010. Replica of drawing held in Archives New Zealand, artist unknown, reference IA1/3124 174/158



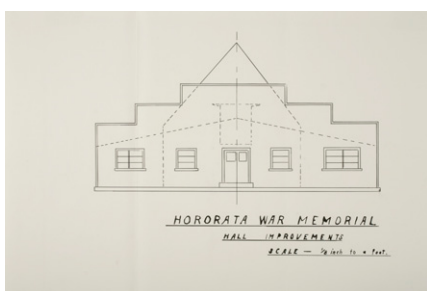
30 Pukeuri Memorial Hall, ink on paper, 208 x 296mm, 2010. Partial replica of drawing held in Archives New Zealand, artist unknown, reference IA1 3134 174/282



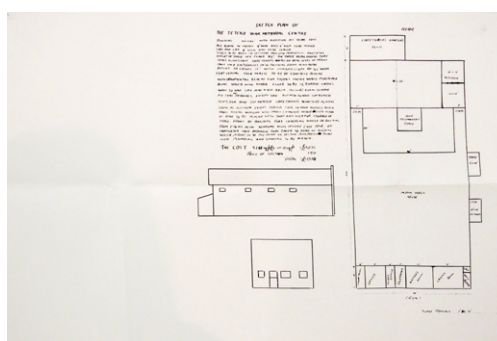
35 Paparoa War Memorial Hall, graphite and coloured pencil on paper, 218 x 360mm, 2010. Replica of drawing held in Archives New Zealand, artist unknown, reference IA1 3121 174/106



36 Ohakea War Memorial Hall, ink on drafting film, 170 x 280mm, 2010. Replica of drawing held in Archives New Zealand, artist unknown, reference IA1/3152 174/618



31 Hororata War Memorial Hall Improvements, ink on paper, 314 x 457mm, 2010. Replica of drawing held in Archives New Zealand, artist unknown, reference IA1/3149 174/540



37 Sketch Plan of the Te Teko War Memorial Centre, ink on paper, 365 x 535mm, 2010. Replica of drawing held in Archives New Zealand, artist unknown, reference IA1 3131 174/2339 BOX 53



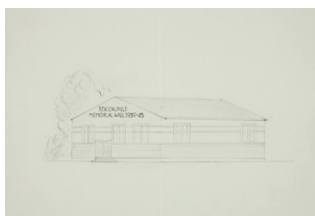
32 Twyford and Raupare War Memorial Hall, ink on paper, 185 x 265mm, 2010. Replica of drawing held in Archives New Zealand, artist unknown, reference IA1 3140 174/376



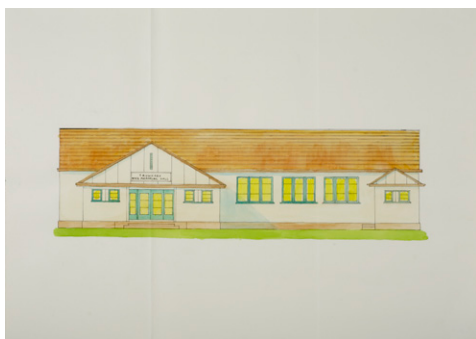
38 The District Memorial Hall Society (Skinner Rd), ink on paper, 295 x 400mm, 2010. Replica of drawing held in Archives New Zealand, artist unknown, reference IA1 3137 174/339



39 Strathmore War Memorial Hall, ballpoint pen on paper, 120 x 215mm, 2010. Replica of drawing held in Archives New Zealand, original drawing by E. Parker, reference IA1/3131



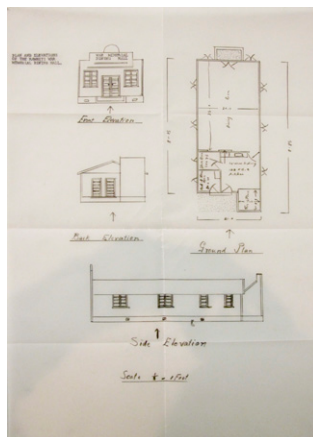
40 Beaconsfield Memorial Hall (Putaruru), graphite on paper, 250 x 335mm, 2010. Replica of drawing held in Archives New Zealand, artist unknown, reference IA1/3139



41 Tauwhare War Memorial Hall, ink and watercolour on paper, 350 x 496mm, 2010. Partial replica of drawing held in Archives New Zealand, artist unknown, reference IA1 3144 174/450



42 Proposed Community Rooms and War Memorial at Paihia, graphite and coloured pencil on paper, 210 x 280mm, 2010. Replica of drawing held in Archives New Zealand, artist unknown, reference IA1/3120



43 Rawhiti War Memorial Dining Hall, ink on drafting film, 480 x 335mm, 2010. Replica of drawing held in Archives New Zealand, artist unknown, reference 34/3/72



44 Riwaka Memorial Hall, graphite, ink and coloured pencil on paper, 215 x 380mm, 2010. Partial replica of drawing held in Archives New Zealand, artist unknown, reference IA1 3155 174/655



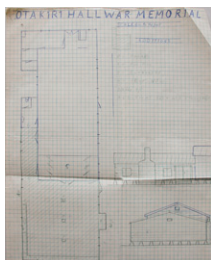
45 Waitotara Hall, ink and pencil on paper, 190 x 287mm, 2010. Replica of drawing held in Archives New Zealand, artist unknown, reference 174/486



46 Morrinsville and Districts War Memorial Hall, coloured pencil and graphite on paper, 323 x 205mm, 2010. Replica of drawing held in Archives New Zealand, artist unknown



47 Proposed Community Centre for Ikawai, ink and watercolour on drafting film, 187 x 430mm, 2010. Replica of drawing held in Archives New Zealand, artist unknown, reference IA1 3117 174/55



48 Otakiri Hall - War Memorial, coloured pencil and ballpoint pen on paper, 275 x 225mm, 2010. Replica of drawing held in Archives New Zealand, artist unknown, reference IA1/3136 174/321

PAINTINGS





1 Kapuni War Memorial Hall 1956, Kristy Smith
acrylic on canvas, 300 x 404mm



2 Diamond Harbour War Memorial Hall, Jane Smith
watercolour on paper, 360 x 410mm



3 Turua Memorial Hall, Evelyn Van de Ven
acrylic and pencil on canvas, 303 x 400mm



4 Mt Eden War Memorial Hall, Paul Woodruffe
acrylic, pencil and coloured pencil on board, 400 x 400mm



5 Paeroa and District War Memorial Hall, Melanie Budge
Pen and pencil on card, 201 x 320mm



6 Hanmer Springs War Memorial Hall, Corina Hazlett
acrylic on canvas, 405 x 405mm



7 Queenstown Memorial Hall, Barbara Glass
watercolour and pencil on paper, 330 x 400mm



8 Pirongia Memorial Hall, Shirley D. Scott
watercolour and ink on paper, 285 x 380mm



9 Mangere Memorial Hall, David White
watercolour, pencil on paper, 180 x 260mm



10 Gisborne War Memorial Theatre, Graeme Mudge
watercolour on paper on foamboard, 300 x 420mm



11 Levin and District War Memorial Hall, R. Neill (Bob)
acrylic on canvas, 300 x 395mm



12 Riverhead, Audrey Parker
oil on canvas, 304 x 405mm



13 Kamo War Memorial Hall, Carole Prentice
oil on canvas, 300 x 400mm



14 Northern Wairoa War Memorial Hall, Marama Ingle
watercolour, pencil on paper, 383 x 535mm



15 Kaukapakapa Hall, Sally Lush
acrylic, screenprint, pencil collage on paper on board, 300 x 400mm



16 Matakohē War Memorial Hall, Dennise Brownlie
acrylic on canvas, 300 x 400mm



17 Shannon Memorial Hall, S. Schmidt
oil on canvas, 290 x 385mm



21 Tapapa War Memorial Hall, Vign Mulholland
oil on canvas, 254 x 510mm



18 Springston South Soldiers Memorial Hall, Mike Glover
oil on board, 395 x 395mm



22 Mauku Victory Hall, Deborah Illingworth
oil on canvas, 250 x 415mm



19 Brixton Memorial Hall / Ratapiko Hall 2005, Laura Young
acrylic on canvas, 460 x 610mm



23 Kaponga War Memorial Hall, Tessa Smith
acrylic on canvas. 300 x 404mm



20 Paekakariki Memorial Hall, Gary Freemantle
Paekakariki Hill floodmud and acrylic on canvas, 250 x 300mm



24 Canvastown Memorial Hall, Lindsay Jefferis
oil on canvas, 325 x 418mm



25 Mayfield War Memorial Hall, Ngaio McKee
watercolour, ink, pastel on paper, 335 x 437mm



26 St Mary's Peace Memorial Hall, Anne Smith
acrylic on canvas, 240 x 330mm



30 Karaka War Memorial Hall, K.A. Moody (Karen)
oil and pencil on canvas, 300 x 400mm



27 Morning Chat / Mangonui War Memorial Hall, Jayne Sprott
oil on board, 415 x 420mm



31 Glenfield War Memorial Hall, Richard Horner
oil on canvas, 405 x 405mm



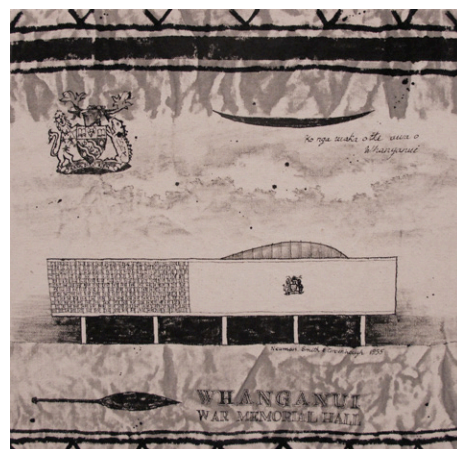
28 Matamata Memorial Centre, Audrey Cameron
oil on board, 320 x 410mm



32 Kurow Memorial Hall, Burns Pollock
watercolour and pencil on paper, 310 x 383mm



29 Lakeside Soldiers Memorial Hall, Jill Lemon
watercolour, ink on paper, 300 x 400mm



33 Whanganui War Memorial Hall, Sally Smith
ink on canvas, 400 x 400mm



34 Mt Pleasant War Memorial Community Centre, Tracey Parker, acrylic on board, 305 x 407mm



38 Omiha Memorial Hall, Michael Morgan, oil on board, 380 x 400mm



35 Ruawai - Toka Toka Memorial Hall, Frances Casey, oil on canvas, 407 x 407mm



39 Tinwald War Memorial Hall 1956, Jack E. Ross, pencil on paper, 260 x 400mm



40 Kaikohe District War Memorial, Dot Field, acrylic on canvas, 300 x 400mm



36 Hukerenui Memorial Hall 1949, Phil Horne, acrylic on paper, 460 x 610mm



41 Waiuku Memorial Town Hall, Peter Hook, oil on canvas, 300 x 400mm



37 Foxton War Memorial Hall, Ronda Turk, acrylic on canvas, 350 x 350mm



42 Puketurua Memorial Hall, Mary Rose, watercolour and pencil on paper, 257 x 380mm



43 Kaikoura Memorial Hall, John Hayward
ink, watercolour on paper, 176 x 354mm



47 Tirau War Memorial Hall, Pat Eastwood
watercolour and ink on paper, 304 x 390mm



44 Northcote War Memorial Hall, Graham Creamer
acrylic on canvas, 406 x 406mm



48 Otaki Memorial Hall, Clive Green
oil on canvas, 410 x 410mm



45 Kiwi Memorial Hall and Featherston ANZAC Hall, Rozanne Doherty,
oil on canvas, 305 x 405mm



49 Upper Wairoa Memorial Complex, R. Fowler
oil on canvas on cardboard, 400 x 350mm



46 Bucklands and Eastern Beaches War Memorial Hall, Geoff Wilkin-
sen, pencil on paper, 295 x 420mm



50 North New Brighton War Memorial and Community Centre, Brenda
Nightingale, watercolour on paper, 208 x 317mm



Fiona Jack's practice spans diverse media to investigate the conceptual, geographical and political definitions of shared space. With an interest in architecture, people, politics and the ways in which we picture ourselves, the Memorial Hall represents an intersection of many ideas.

With grateful acknowledgement of the following people and institutions:

The artists, contributors and hall committees

The Govett Brewster Art Gallery

The University of Auckland

Two Rooms Gallery

Clouds Publishing

Archives New Zealand

WITT

Rhana Devenport, Gwyn Porter, Bill McKay, Helen Telford,

Jenny Todd, Meredith Robertshaw, Jock Phillips, Nigel

Prickett, Ron Lambert, Anna Parlane, Anoushka Akel, Melanie

Bell, Taarati Tairoa, all the Govett staff, Bryan James, Kalee

Jackson, Jeremy Thomson, Sashil Dayal, Warren Olds, Heather

Galbraith, Lindsay Rihari MacLeod, Marion MacLeod, Ian

Clothier, Jeena Shin, Peter Shand, Tom Nicholson, Sam

Durant, Janet Sarbanes, Georgina White, Chantelle, Marina and

Murray at Two Rooms, the Jack family.